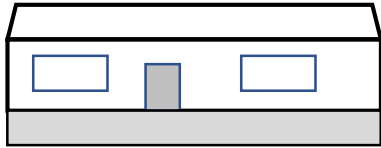


Supplement to the handout for RE14R17 Architecture

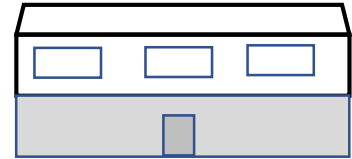
Building Types clarification

Provided by Isabelle Perkins, Isabelle@IsabellePerkins.com



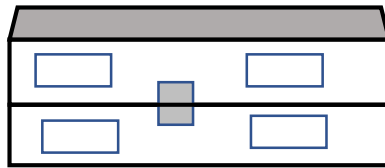
Ranch:

One level living, front door at the main level



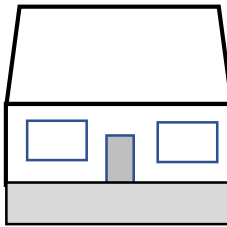
Raised Ranch:

One level living, front door at the basement level, full flight of stairs inside



Split Entry or Bi-level

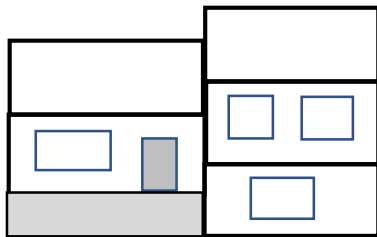
Two full levels to the house, with the entrance between the levels, Once inside the house, ½ flight to go to main living area, ½ flight down to go to lower level



Cape Cod:

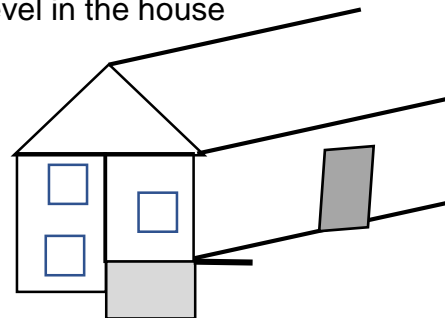
One and a half level living, 2nd floor is under the roof
Many different dormer possibilities for better use of the 2nd floor

Split level: Floors are staggered, no continuous level in the house



Stacked split, or side to side:

The staggering is in the length of the house – floors left and right of the front door are not at the same height



Front to back split or lofted split:

The staggering is done on the width of the house – the back of the house is lower/ higher than the front